

# North Somerset Council

## REPORT TO THE COUNCIL

**DATE OF MEETING: 12TH NOVEMBER 2019**

**SUBJECT OF REPORT: CLIMATE EMERGENCY STRATEGY AND ACTION PLAN**

**TOWN OR PARISH: ACROSS ALL NORTH SOMERSET**

**OFFICER/MEMBER PRESENTING: CLLR BRIDGET PETTY**

**KEY DECISION: NO**

## RECOMMENDATIONS

- That Council agrees the Climate Emergency Strategy and Action Plan is the basis by which the council will respond to the Climate Emergency motion from February 2019
- That Council agrees that the Strategy and Action Plan are live, and that projects and initiatives identified in the Action Plan will be developed in line with governance procedures and formal decision making as per Contract Standing Orders and the constitution
- That Council asks the Chief Executive to write to Government asking for support in respect of items in paragraph 3.21

## 1. SUMMARY OF REPORT

- 1.1 In response to the declaration of a Climate Emergency at Full Council in February 2019, a Climate Emergency Strategy and Action Plan has been prepared and is appended to this report.
- 1.2 The Strategy document is a simple single page document that sets out an overarching position to inform the more detailed Action Plan. The Action Plan sets out a series of initiatives and projects that will entail direct action by the council, new policy and strategy and then on-going engagement and communications to influence behavioural change of people living and working in North Somerset.
- 1.3 As well as engaging at a regional and national level, it is proposed that the Chief Executive writes to government setting out our ambitions and the need for support through better strategy coordination, more robust planning policy guidance and financial assistance to lead North Somerset to carbon neutrality by 2030.

## 2. POLICY

- 2.1 At the meeting of The Council on 19<sup>th</sup> February 2019, members unanimously agreed:  
*that this Council*

(1) *recognises the serious global Climate Challenge Emergency;*

(2) *asks officers to prepare a report on the actions North Somerset Council could take with the aim of achieving carbon neutrality by 2030 with an idea of costings, aiming to bring back a report to Council around June; and*

(3) *asks the Chief Executive to write to the Government minister on our achievements and asks for resources when we know what the detailed proposals might be.*

- 2.2 The UK Climate Change Act 2008 set a statutory requirement to reduce UK greenhouse gas emissions by 80% by 2050 from 1990 levels. The UK Committee on Climate Change recommended in May 2019 that the statutory target be increased to net-zero greenhouse gas emissions by 2050 and the government accepted this.
- 2.3 The Intergovernmental Panel on Climate Change (IPCC) published in 2018 a report that advised that global warming must be limited to 1.5°C to avoid a catastrophic risk to health, livelihoods, food security, water supply, human security and economic growth. The report warned that there is a period of 12 years for action required to avert the crisis and avoid the worst impacts. It is this report that has led to ambitions to achieve carbon neutrality by 2030.
- 2.4 The Greenhouse Gas Protocol defines emissions by three categories to understand their source and to devise strategies of tackling those emissions. These are known as Scopes One, Two and Three. The Scopes can be applied specifically to an organisation (including the council) but can also be applied to the resident population of North Somerset as a place.
- 2.5 **Scope One** emissions are those that are derived *directly* from the activities of a person or an organisation or is under its control. For the council, this would include its vehicle fleet, while for individuals it could include the burning of fuel in a burner.
- 2.6 **Scope Two** refers to *indirect* emissions from the production of electricity that is purchased and used, so the more electricity used in North Somerset that is generated from renewable sources the better.
- 2.7 **Scope Three** refers to all other *indirect* emissions of the activities that an organisation or person does not own or control. For the council this would include emissions generated by its staff commuting to work. Scope Three emissions are the most challenging to reduce and will require significant behavioural change of everyone who lives in, works in and travels through North Somerset.
- 2.8 The council is believed to be responsible for less than 2% of all carbon emissions in North Somerset (this is being verified). An online tool recently published by Friends of the Earth (<https://friendsoftheearth.uk/climate-friendly-communities>) identifies that North Somerset Council is one of the better performing local authorities at responding to climate change and the July report to Council highlighted recent achievements. There is of course much more to do and achieving carbon neutrality by 2030 will only be achieved with radical behavioural adjustments across the area.

### **3 DETAILS**

- 3.1 In February 2019, North Somerset Council declared a Global Climate Emergency (GCE) and set to understand the measures and costs required to achieve carbon neutrality by 2030, and to ask the Chief Executive to write to government asking for support.
- 3.2 In July 2019, the Executive Member for Climate Emergency and Environment presented an update report to Council asking for a Climate Emergency Strategy and Action plan to be prepared, to note the council's achievements thus far and to establish a cross-party working group of members to oversee the council's response.

#### *Climate Emergency Working Group*

- 3.3 A cross party Working Group of members has now been established and has met on three occasions to agree terms of reference and to consider drafts of the Strategy and Action Plan.
- 3.4 The Working Group will continue to meet on a monthly basis and will be served by a project group of officers working across the organisation on initiatives including planning, waste, sustainable transport, communications, housing and public health.
- 3.5 The Working Group will oversee and sponsor the development of initiatives within the Action Plan. These will be developed through the usual internal governance arrangements as per the council's constitution. These means that decisions to proceed with projects or investments will be made by senior officers, Executive Members, the Executive or Full Council depending on scale and budget.

#### *Climate Emergency Strategy*

- 3.6 A simple 'strategy on a page' has been produced so that it ensures the council's ambitions are accessible. It is designed to be clear and logical so that residents, business, community groups and partners can easily understand the council's approach to addressing the Climate Emergency in North Somerset.
- 3.7 It sets out the context, some key principles, some categories of methodology, summarises governance arrangements and how the council will work with stakeholders.
- 3.8 The Strategy is a 'live' summary document and it is proposed that it will be reviewed annually. The development of projects and initiatives identified on the accompanying Action Plan will be in far more detail as outcomes, financial and legal considerations and risks are fully examined and justified.

#### *Climate Emergency Action Plan*

- 3.9 Alongside the Strategy sits the Climate Emergency Action Plan. The Action Plan is also a live document that will be regularly updated as more information and data about specific initiatives, projects and policies are understood. It considers how projects and initiatives can help achieve carbon neutrality by 2030 in relation to the key principles and method identified in the Strategy document. It then considers the benefits and deliverability of the identified initiatives, timeframes and financial

implications. The Action Plan also considers the role of the council itself in delivering initiatives alongside regional and national working.

- 3.10 The identifies 'themes of activity' including:
- 3.11 *Become a net zero carbon council:* this includes the ways the council can show leadership in the community, manage its workforce, devise strategy and deliver services. Some activities are already underway while others will require new ways of working or the implementation of new types of policy or project.
- 3.12 *An energy efficient built environment:* this refers to the council's planning policies and its own development programme to ensure that new development minimises its contribution to carbon generation through the location, mix of uses and forms of construction.
- 3.13 *Replenish our carbon stores:* this considers how the strategic oversight of our green infrastructure and management of parks and open spaces can support measures such as re-wilding to help store carbon.
- 3.14 *Adapting to climate change:* this includes how the existing communities will need to adapt to achieve carbon neutrality. This will represent some of the most practically and financially challenging measures that will require substantial support from government.
- 3.15 *Renewable energy generation:* this suggests who the council can encourage the decarbonisation of energy use through greater investment in and use of renewable energy generation in North Somerset and to discourage the use of fossil fuels
- 3.16 *Reduce emissions from transport:* this includes measures to encourage walking and cycling and use of public transport and to discourage the use of the private car. Reducing the impact of transport on carbon emissions represents a substantial challenge in achieving carbon neutrality.
- 3.17 *Repair, reuse, reduce and recycle:* this includes measures the council could take in its collection and processing of household and green waste, and behavioural change in communities to reduce the amount of waste generated.

#### *Chief Executive letter to government*

- 3.18 While the council can have a direct impact on its own carbon footprint and can prepare policy and strategy to influence the behaviour of others, it will need the support of government to achieve carbon neutrality across North Somerset.
- 3.19 While not part of the West of England Combined Authority, North Somerset is clearly part of a wider city region in respect of transport, the labour and housing markets and the need to accommodate substantial population growth. There will therefore be a need for coordinated action to lobby government at a West of England level.
- 3.20 The challenges faced by North Somerset will be replicated across the country as Local Government as a sector faces up to challenges. The Local Government

Association (LGA) is already lobbying Whitehall and the council will contribute actively to this process.

- 3.21 Nonetheless, it is appropriate for the council to communicate directly with government to demonstrate its commitment to tackling the Climate Emergency and set out expectations of government to provide support. This will include:
- Government limiting our ability to demand the highest standards of energy efficiency and use of renewable energy from new buildings
  - Changes to planning guidance to encourage the use of onshore windfarms and to discourage the exploration and development of fossil fuels (including fracking)
  - Identifying the significant capital and systems funding to undertake a substantial retrofitting of existing buildings to decarbonise
  - A substantial investment in public transport, active travel and Mobility As A Service to provide a genuine alternative to travelling by car
  - Far greater coherence and coordination across strategy, policy and financial incentives to achieve carbon neutrality across homes, workplaces and transport

#### **4. CONSULTATION**

- 4.1 The cross-party Climate Emergency Working Group have overseen and been engaged with the preparation of the Strategy and Action Plan documents. These documents will remain live and open to regular review including by the council's scrutiny panels with whom there will be engagement.
- 4.3 Communities will be encouraged to engage with the proposals of the Action Plan as part of the communications plan across multiple channels. The council will also use its E-Consult online module to undertake consultation.
- 4.4 As initiatives within the Action Plan are developed as firm proposals, they will require a range of further engagement and consultation ranging from Equalities Impact Assessments for changes to the council's budget through to formal and statutory consultation on changes to planning policy documents.

#### **5 FINANCIAL IMPLICATIONS**

- 5.1 This report has no direct financial implications.
- 5.2 There will be capital and revenue implications for the council in taking forward changes identified in the Action Plan and these will be fully considered through formal governance arrangements and decisions taken as per the council's constitution.
- 5.3 Achieving Climate Emergency objectives may have implications for decisions of best value or best consideration through projects, developments and investments and

may have an implication of costs of delivery or value of receipts. This will be considered in full on a case by case basis.

- 5.4 Revenue funding has been identified to support the recruitment of a Climate Emergency Project Manager to provide additional resource to work across the organisation to development of policies, initiatives and projects.

## **6. LEGAL POWERS AND IMPLICATIONS**

- 6.1 This report has no direct legal implications.
- 6.2 As initiatives within the Action Plan are developed, there will likely legal implications for the council, and these will be fully considered through formal governance arrangements and decisions taken as per the council's constitution.

## **7. CLIMATE CHANGE AND ENVIRONMENTAL IMPLICATIONS**

- 7.1 This report and the Strategy and Action Plan form the basis of North Somerset's approach to achieving net zero carbon in North Somerset by 2030.

## **8. RISK MANAGEMENT**

- 8.1 As projects are developed, detailed risk appraisals will be undertaken to anticipate and mitigate barriers to delivery. There will inevitably need to be consideration of risks and the agreement of compromises to achieve overall ambitions for North Somerset.
- 8.2 For example, there is a high risk that the delivery of capital projects such as schools or housing developments will incur additional cost in order to achieve higher standards of energy efficiency or use of renewable technology. This cost pressure will need to be funded.
- 8.3 There is also risk that the development of more energy efficient homes and use of renewable energy may be set against the cost of providing affordable housing through the planning process.

## **9. EQUALITY IMPLICATIONS**

- 9.1 Equalities Impact Assessments will likely be required for many of the projects and policy areas identified within the Action Plan and these will be undertaken on a case by case basis.
- 9.2 Strategically, responding to the Climate Emergency has implications for everyone, but the council will also need to be mindful of how specific initiatives may disproportionately affect minority groups.

## **10. CORPORATE IMPLICATIONS**

- 10.1 The development of initiatives identified in the Action Plan will need to be considered in the light of the council's corporate priorities and statutory obligations.
- 10.2 As projects are taken forward it is likely services in every division of every directorate will be affected by the content of the Strategy and the Action Plan.

## **11. OPTIONS CONSIDERED**

- 11.1 The February 2019 motion specifically required the preparation of a report on how to achieve carbon neutrality by 2030. The council has chosen to prepare a positive Action Plan that identifies a set of initiatives, projects and policy changes that can help achieve that ambition.

## **AUTHOR**

Alex Hearn  
Assistant Director Placemaking & Growth

## **APPENDICES**

Appendix 1: North Somerset Council Climate Emergency Strategy  
Appendix 2: North Somerset Council Climate Emergency Action Plan

## **BACKGROUND PAPERS**

- Joint Local Transport Plan: <https://travelwest.info/projects/joint-local-transport-plan>
- Joint Spatial Plan: <https://www.jointplanningwofe.org.uk/consult.ti>
- UK local authority and regional carbon dioxide emissions national statistics: <https://www.gov.uk/government/statistics/uk-local-authority-and-regional-carbon-dioxide-emissions-national-statistics-2005-2016>
- ONS sub-national population projections: <https://www.ons.gov.uk/peoplepopulationandcommunity/populationandmigration/populationprojections>

# North Somerset Climate Emergency Strategy

The North Somerset Climate Emergency Strategy is a live document which outlines our **seven key principles** for how we will address the causes and consequences of climate change, with the aim to be carbon neutral by 2030. The Strategy is supported by the accompanying Climate Emergency Strategic Action Plan and Data Dashboard. The Strategy is owned by the cross-party member Climate Emergency working group and will link in with the developing North Somerset Corporate Plan 2020-2025, our Medium Term Financial Plan, and other strategic plans including the Economic Plan and the Joint Local Transport Plan. The Climate Emergency Strategy and Action Plan will be reviewed annually to confirm our principles and to analyse our progress.

## Context

- 1 °C** Damaging climate impacts are already being felt today at 1° of warming
- 1.5 °C** Keeping below 1.5° would help to protect ecosystems limiting impacts on vulnerable groups
- 2 °C** Below 2° will limit the most damaging effects of climate change
- 3 °C** We are currently on track for 3° of warming – the tipping point
- 4 °C** Unchecked emissions growth could lead to severe and widespread climate change by 2100

## Our commitment: North Somerset aims to be a carbon neutral council and a carbon neutral area by 2030

### Key principles

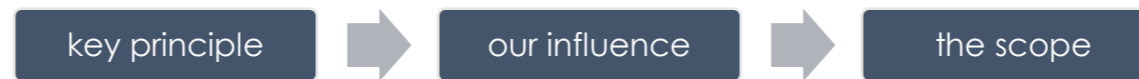
- Become a net zero carbon council
- An energy efficient built environment
- Renewable energy generation
- Repair, reuse, reduce and recycle
- Replenish our carbon stores
- Reduce emissions from transport
- Adapting to climate change

### Our scope

North Somerset Council only has direct control over a small proportion of the total carbon emissions of the area. Analysis is ongoing to confirm this proportion but it is believed to be less than 2%. Reducing these emissions will form our work around **becoming a net zero carbon council**.

For our other **key principles**, the council will take a leadership role. Part of this role will be considering our matrix of influence to identify actions that we can help to enable, support and influence both locally and nationally.

The council will also seek to understand how our work will reduce differently scoped emissions in North Somerset. These include **scope one**: all direct emissions from activities within our area, **scope two**: all indirect emissions from energy production/ use in our area, and **scope three**: all other indirect emissions from activities within our area, occurring from sources we do not own or control.



### North Somerset Council's matrix of influence



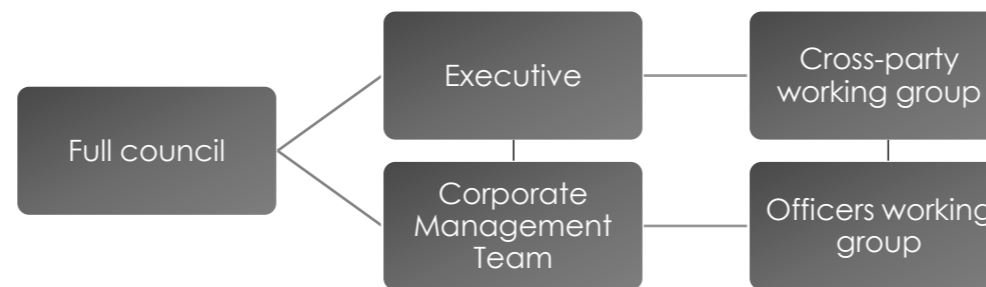
### The how

For each key principle within this strategy, actions have been identified that will help to either avoid carbon production (low carbon homes), reduce the amount (renewable electricity), mitigate against production (public transport) or help to store it away (tree planting).

- Avoidance
- Reduction
- Mitigation
- Storage

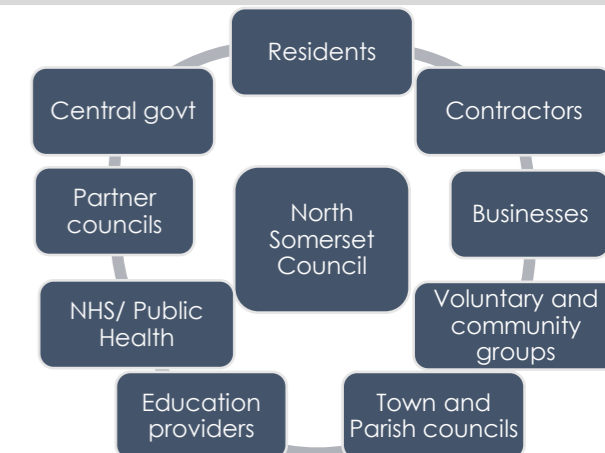
### Governance

The Strategy is owned by the cross-party member working group, with the Action Plan owned by the officers working group. Progress is reported to Corporate Management team via officers and to Executive via the members working



### Stakeholders

Our stakeholders are aligned to our matrix of influence, some we can directly influence through contracts, funding or support, others we can guide through policy change, and others we will need to challenge.



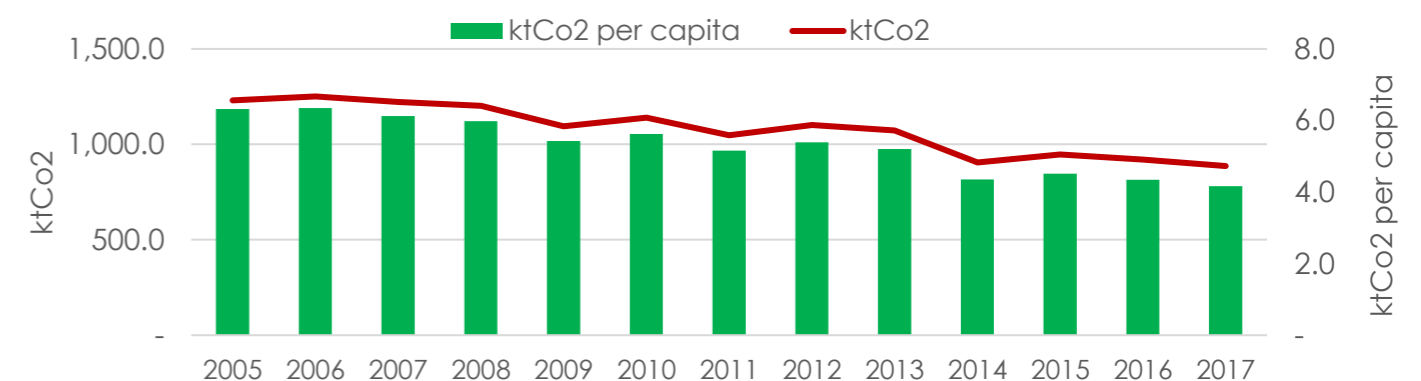
### How we will measure progress

- The Climate Emergency Action Plan is aligned to the seven **key principles** of this strategy, with multiple actions for each principle all aligned to our level of influence and the scope each action will have on emissions (scope one, two or three).
- For each action we ask: **what will success look like?** These success measures form the basis of the Climate Emergency Data Dashboard. The Data Dashboard measures our progress on a quarterly basis.

#### Examples

Key principle	Scope	Actions	Success measures	Method
Become a net zero carbon council	Scope one and two	100% council electricity supplied by renewables	<ul style="list-style-type: none"> <li>0% electricity from non-renewable sources</li> </ul>	Reduction
Replenish our carbon stores	Scope one, two, three	Identify opportunities for nature recovery networks	<ul style="list-style-type: none"> <li>Plant x trees by 2025</li> <li>Reduce amenity grass by x% by 2025</li> </ul>	Storage

Carbon emissions in North Somerset



Also included in the Data Dashboard is an overview of North Somerset's carbon emissions, both by tonnage and per capita. As we progress against our Action Plan we will measure the progress towards our aim of becoming a carbon neutral council and a carbon neutral area by 2030.



# North Somerset Climate Emergency Strategic Action Plan

The North Somerset Climate Emergency Strategic Action Plan is a live document which lists a series of over-arching actions that we will explore in North Somerset to address the causes and consequences of climate change. Each action could contribute towards our aim of being a carbon neutral council and a carbon neutral area by 2030. The actions are aligned to the **seven key principles** within our Climate Emergency Strategy.

The actions listed are subject to further exploration and in some cases, targeted business cases. Some actions fall under more than one principle and where that is the case they have been listed under the 'primary principle'. A more detailed working plan that informs the work programme for North Somerset Council and partners includes additional detail on calculations for carbon emission reductions, quantity of greenhouse gas removals of each action, financial estimates, ease of delivery, and specific targets for each year to 2030.

The North Somerset Climate Emergency Strategy can be found [here](#).

## Our commitment: North Somerset aims to be a carbon neutral council and a carbon neutral area by 2030

### Become a net zero carbon council

- Take a **leadership role** across the area to encourage, support and enable others to reduce their carbon emissions
- Appoint a Climate Emergency Programme Manager to oversee the CE Strategy delivery and Action Plan implementation
- Ensure a programme of **robust reporting** on progress internally and externally (data dashboard)
- Assess all major council projects for their impacts on carbon emissions
- **'Carbon proof'** all future strategies and policies and ensure mitigations
- Continue to develop the Council's sustainable procurement policies and practices
- Support flexible working and home working to reduce the **carbon footprint** of our workforce
- Continue to provide/promote schemes such as 'cycle to work' and 'Travelwest challenge' to encourage **sustainable** transport choices by our workforce
- Calculate and then rapidly reduce the council's use of **single-use plastic**
- Ensure all the council's electricity supply is provided by **100%** renewably generated sources
- Review our estate to investigate means of increasing **energy efficiency** of heating, lighting and cooling systems
- Investigate the business case for acquiring or funding **renewable** energy installations in North Somerset
- Replace all streetlighting with **low energy** LED units
- Renew our ageing fleet with fully electric vehicles and charging facilities
- Work with our contractors and service providers to **support them** in reducing their carbon footprint, take advantage of renewable energy sources, consider an electric fleet, and reduce their use of single-use plastic.

### An energy efficient built environment

- Aim for all our new homes to be **zero carbon** or net carbon plus
- Aim for all our own new commercial space to be zero carbon or net carbon plus
- Where possible, specify precision manufactured buildings for homes, community and commercial space
- Aim to focus new **mixed-use development** on brownfield land, in town centres with public transport and proximity to major employment hubs
- Work with schools and other stakeholders to ensure their estate is energy **efficient** and install **renewable** energy sources
- Develop planning policy to actively **support community** led housing, self-build and custom build housing and consider use of council land to enable this.

### Renewable energy generation

- Explore the development of strategy that discourages investment in **fossil fuels** and promotes renewable energy generation
- Pass a motion declaring North Somerset a **Frack Free Zone** to discourage the exploration and production of shale gas
- Encourage our partners and stakeholders to procure electricity supply from **100% renewably generated sources**
- Encourage our residents to consider 100% renewable energy and support access to **grant funding** where available.

### Reduce emissions from transport

- Continue to drive project delivery to **shift** from private car use
- Develop policies that **actively encourage** the demand for and delivery of connected public transport
- Develop and secure funding for projects to grow the **walking and cycling network** across the district
- Implement our project to deliver an electric charging hub in Portishead
- Require all schools to deliver *travel plans* which maximise the number of students walking, cycling or travelling **sustainably** to school.
- Review parking planning guidance note to consider maximum parking levels and reduce the number of spaces delivered for new development.
- Encourage resident parking schemes, car sharing schemes and walking and cycling to support
- Encourage our residents to consider their **transport choices**.

### Replenish our carbon stores

Develop and implement our **Green Infrastructure Strategy** and as part of that:

- Identify Council land suitable for **rewilding** with aim of reducing areas off amenity grass by 20%
- Identify landscape scale tree planting opportunities to deliver **nature recovery networks** especially woodland creation and linking woodlands
- Identify Council land suitable for changing grass cutting regimes to encourage **biodiversity**
- Encourage and support our residents to create **wildflower gardens** through schemes such as the 'Blue Heart'.

### Repair, reuse, reduce and recycle

- **Zero** kerbside waste to landfill with an increasing percentage recycled and the remainder used as **energy from waste**
- Consider our green waste collection to encourage composting and rewilding
- Increase the percentage of Improved **reuse areas** to be negotiated with contractors and encourage third sector involvement, such as Changing Lives in Clevedon
- Encourage our residents to reuse, repair and recycle
- Sign-post community groups to **expertise and funding**.

### Adapting to climate change

- Ask Government to rapidly review the impacts which achieving net-zero will have across society and put in place effective measures to ensure that we have a **fair transition** to a net-zero country where the most vulnerable groups are supported
- Ensure a **resilient infrastructure** in North Somerset including retrofitting our built environment where necessary
- Ensure that work around our **flood defences** considers climate change and any local and regional effects
- Ensure North Somerset's **Emergency Management Plan** is robust and resourced.

## Our commitment: North Somerset aims to be a carbon neutral council and a carbon neutral area by 2030

### Scope

S1: all direct emissions from activities within our area  
 S2: all indirect emissions from energy production/ use in our area  
 S3: all other indirect emissions from activities within our area, occurring from sources we do not own or control

### Tonnage

H: high  
 M: medium  
 : lo  
 TBC: to be confirmed  
*Note, these are estimates subject to further work*

### Deliverability

GREEN: delivery is unlikely to pose any challenges or difficulties/ additional financial costs will be minimal  
 AMBER: delivery will pose some challenges or difficulties/there is likely to be an additional financial cost  
 RED: delivery will pose significant challenges or difficulties/there is likely to be a significant financial cost

Action	Method	Influence	Stakeholders	Scope	Tonnage	Other benefits	Deliverability
<b>Become a net zero carbon council</b>							
Take a leadership role across the area to encourage, support and enable others to reduce their carbon emissions	All	An area we directly control	All	All	TBC		GREEN
Appoint a Climate Emergency Project Manager to oversee the CE Strategy delivery and Action Plan implementation	All	An area we directly control	All	All	TBC		GREEN
Ensure a programme of robust reporting on progress internally and externally (data dashboard)	All	An area we directly control	All	All	TBC		GREEN
Assess all major council projects for their impacts on carbon emissions	All	An area we directly control	North Somerset Council and partners	All	TBC		AMBER
'Carbon proof' all future strategies and policies and ensure mitigations	All	An area we directly control	North Somerset Council and partners	All	TBC		AMBER
Continuous development of the Council's sustainable procurement policies and practices	All	An area we directly control	North Somerset Council and contractors	All	TBC		AMBER
Support flexible working and home working to reduce the carbon footprint of our workforce	Reduction	An area we directly control	North Somerset Council	S1	M	Productivity gains Public health outcomes	AMBER
Continue to provide/promote schemes such as 'cycle to work' and 'Travelwest challenge' to encourage sustainable transport choices by our workforce	Avoidance Reduction	An area we can directly control or can influence through our contracts or through funding/support/policy	North Somerset Council, community groups and partners	S1	M	Air quality improvements Public health outcomes	GREEN
Calculate and then rapidly reduce the council's use of single-use plastic	Reduction	An area we directly control	North Somerset Council	S1	L	Reduced waste	GREEN
Ensure all the council's electricity supply is provided by 100% renewably generated sources	Reduction	An area we directly control	North Somerset Council and contractors	S2	M	Supports investment in technology	GREEN
Review our estate to investigate means of increasing energy efficiency to heating, lighting and cooling systems	Reduction	An area we directly control	North Somerset Council and contractors	S1	H	Capital investment in estate Lower energy costs	AMBER
Investigate the business case for acquiring or funding renewable energy installations in North Somerset	Avoidance	An area we directly control	North Somerset Council and contractors	S1	H	Supports investment in technology Security of own supply	AMBER

: lo  
TBC: to be confirmed  
Note, these are estimates subject to further work

Action	Method	Influence	Stakeholders	Scope	Tonnage	Other benefits	Deliverability
Replace streetlighting with low energy LED units	Reduction	An area we directly control	North Somerset Council and contractors	S2	H	More resilient infrastructure Lower energy costs	
Renew our ageing fleet with fully electric vehicles and charging facilities	Avoidance Reduction	An area we can directly control or can influence through our contracts or through funding/support/policy	North Somerset Council, partners and contractors	S1	M	Supports investment in technology Air quality improvements	
Work with our contractors and service providers to support them in reducing their carbon footprint, take advantage of renewable energy sources, consider an electric fleet, and reduce their use of single-use plastic	Avoidance Reduction	An area we can influence through our contracts or through funding/support	North Somerset Council, partners and contractors	S1	H	Supports investment in technology	
<b>An energy efficient built environment</b>							
Aim for all our new homes to be zero carbon or net carbon plus	Reduction	An area we directly control	North Somerset Council, partners and contractors	S1	H	Air quality improvements Reduced carbon	
Aim for all our own new commercial space to be zero carbon or net carbon plus	Avoidance	An area we directly control	North Somerset Council, partners and contractors	S1	H	Lower energy costs for occupants	
Where possible, specify precision manufactured buildings for homes, community and commercial space	Avoidance Mitigation	An area we directly control	North Somerset Council, partners and contractors	S1	H	Reduced wastage Less time on site Drives new skills	
Aim to focus new mixed-use development on brownfield land, in town centres with public transport and proximity to major employment hubs	Avoidance Reduction Mitigation	An area we can directly control or can influence locally and nationally	North Somerset Council, partners and central government	S3	H	Critical mass for transport and community infrastructure Protect habitats Affordable housing	
Work with schools and other stakeholders to ensure their estate is energy efficient and install renewable energy sources	Avoidance Reduction	An area we can influence through our contracts or through funding/support	North Somerset Council and partners	S2	H	Supports investment in technology Security of own supply	
Develop planning policy to actively support community led housing, self-build and custom build housing and consider use of council land to enable this	Reduction	An area we can directly control or can influence locally and nationally	North Somerset Council, partners and central government	S1	L	Diversify housing delivery models	
<b>Replenish our carbon stores</b>							
Develop and implement our Green Infrastructure Strategy	Mitigation Storage	An area we can directly control	North Somerset Council, partners and contractors	S1	M	Public health outcomes Ecological diversity	
Identify Council land suitable for rewilding with aim of reducing amenity grass by 20%	Mitigation Storage	An area we directly control	North Somerset Council	S1	H	Public health outcomes Ecological diversity	
Identify landscape scale tree planting opportunities to deliver nature recovery networks especially woodland creation and linking woodlands	Mitigation Storage	An area we directly control	North Somerset Council, partners and contractors	S1	H	Public health outcomes Ecological diversity	
Identify Council land suitable for changing grass cutting regime to encourage biodiversity	Mitigation Storage	An area we directly control	North Somerset Council, partners and contractors	S1	M	Public health outcomes Ecological diversity	

: lo  
TBC: to be confirmed  
Note, these are estimates subject  
to further work

Action	Method	Influence	Stakeholders	Scope	Tonnage	Other benefits	Deliverability
Encourage and support our residents to create wildflower gardens through schemes such as the 'Blue Heart'	Mitigation Storage	An area we directly control	North Somerset Council, community groups and residents	S1	M	Public health outcomes Ecological diversity	
<b>Adapting to climate change</b>							
Ask Government to rapidly review the impacts which achieving net-zero will have across society and put in place effective measures to ensure that we have a fair transition to a net-zero country where the most vulnerable groups are supported	Adaption	An area we can ask for help nationally	North Somerset Council and central government	N/A	N/A		
Ensure a resilient infrastructure in North Somerset including retrofitting our built environment where necessary	Adaption	An area we directly control	North Somerset Council, partners and central government	N/A	N/A		
Ensure that work around our flood defences considers climate change and any local and regional effects	Adaption	An area we directly control	North Somerset Council, partners and central government	N/A	N/A		
Ensure North Somerset's Emergency Management Plan is robust and resourced	Adaption	An area we directly control	North Somerset Council	N/A	N/A		
<b>Renewable energy generation</b>							
Explore the development of strategy that discourages investment in fossil fuels and promotes renewable energy generation	Avoidance Reduction	An area we directly control	North Somerset Council	S3	H	Investment in new technology Public engagement	
Pass a motion declaring North Somerset a Frack Free Zone to discourage the exploration and production of shale gas	Avoidance	An area we directly control	North Somerset Council	S3	M	Investment in new technology Public engagement	
Encourage our partners and stakeholders to procure electricity supply from 100% renewably generated sources	Avoidance Reduction	An area we can influence through our contracts or through funding/support	North Somerset Council, partners and contractors	S3	M	Investment in new technology Public engagement	
Encourage our residents to consider 100% renewable energy and support access to grant funding where possible	Avoidance Reduction	An area we can influence through support	North Somerset Council, community groups and residents	S3	M	Investment in new technology Public engagement	
<b>Reduce emissions from transport</b>							
Continue to drive project delivery to shift from private car use	Avoidance	An area we can influence or ask for help locally/nationally	North Somerset Council, partners and central government	S3	H	Air quality improvements Access to employment Opportunities for investment	
Develop policies that actively encourage the demand for and delivery of connected public transport	Reduction	An area we can influence or ask for help locally/nationally	North Somerset Council, partners and central government	S3	M	Public health outcomes Ease congestion Air quality improvements	
Develop and secure funding for projects to grow the walking and cycling network across the district	Avoidance	An area we can influence or ask for help locally/nationally	North Somerset Council, partners and central government	S1	M	Public health outcomes Ease congestion Air quality improvements	

: lo  
TBC: to be confirmed  
Note, these are estimates subject to further work

Action	Method	Influence	Stakeholders	Scope	Tonnage	Other benefits	Deliverability
Implement our project to deliver an electric charging hub in Portishead	Avoidance Reduction	An area we directly control	North Somerset Council	S1	M	Air quality improvements Investment in new technology	
Require all schools to deliver travel plans which maximise the number of students walking, cycling or travelling sustainably to school.	Reduction Mitigation	An area we can influence or ask for help and support locally	North Somerset Council and education providers	S1	M	Air quality improvements Public health outcomes Public engagement	
Consider reviewing parking planning guidance note to set maximum parking levels and reduce the number of spaces delivered for new development.	Avoidance Reduction	An area we directly control	North Somerset Council	S1	M	Air quality improvements	
Encourage resident parking schemes, car sharing schemes and walking and cycling to support	Avoidance Reduction	An area we directly control and/or influence through support	North Somerset Council, community groups and residents	S1	M	Air quality improvements	
Encourage our residents to consider their transport choices	Avoidance Reduction	An area we can influence through support	North Somerset Council, community groups and residents	S1	M	Air quality improvements Public health outcomes	
<b>Repair, reuse, reduce and recycle</b>							
Zero kerbside waste to landfill with an increasing percentage recycled and the remainder used as energy from waste	Avoidance	An area we directly control	North Somerset Council and contractors	S3	H	Managing international impacts Ecological diversity	
Consider our green waste collection to encourage composting and rewilding	Reduction	An area we directly control	North Somerset Council and contractors	S3	M	Financial savings	
Increase the percentage of Improved reuse areas to be negotiated with contractors and encourage third sector involvement, such as Changing Lives in Clevedon	Avoidance	An area we can directly control or can influence through our contracts or through funding/support/policy	North Somerset Council and contractors	S1	M	Resident engagement	
Encourage our residents to reuse, repair and recycle	Reduction	An area we can influence through support	North Somerset Council, community groups and residents	S1	M	Resident engagement	
Sign-post community groups to expertise and funding	Mitigation	An area we can influence through support	North Somerset Council and community groups	S1	L	Community engagement	